



LISTING INFORMATION OF
Alucoil, S.A.U. - Larcore Honeycomb A2 Panel
SPEC ID: 46046

Alucoil
Poligono Industrial De Bayas
C.IRCIO. Parcelas R-72/77
Miranda de Ebro, Burgos 09200
Spain

This report is for the exclusive use of Intertek's Client and is provided pursuant to the agreement between Intertek and its Client. Intertek's responsibility and liability are limited to the terms and conditions of the agreement. Intertek assumes no liability to any party, other than to the Client in accordance with the agreement, for any loss, expense or damage occasioned by the use of this report. Only the Client is authorized to permit copying or distribution of this report and then only in its entirety. Any use of the Intertek name or one of its marks for the sale or advertisement of the tested material, product or service must first be approved in writing by Intertek. The observations and test results in this report are relevant only to the sample tested. This report by itself does not imply that the material, product, or service is or has ever been under an Intertek certification program.

LISTING INFORMATION

Larcore® Honeycomb A2 Panels are comprised of 0.7 mm aluminum skins and an aluminum honeycomb core. The overall thickness of the panel is 14 mm.

RATINGS

STANDARD	RATING	DESIGN NO.
NFPA 285	Meets conditions of acceptance	ALU/MCMWP 30-03

Attribute	Value
Code Reports	No
Criteria	NFPA 285 (2012)
CSI Code	07 42 13 Metal Wall Panels
Intertek Services	Certification
Listed or Inspected	LISTED
Listing Section	WALL ASSEMBLIES
Spec ID	46046

DRAWING INDEX

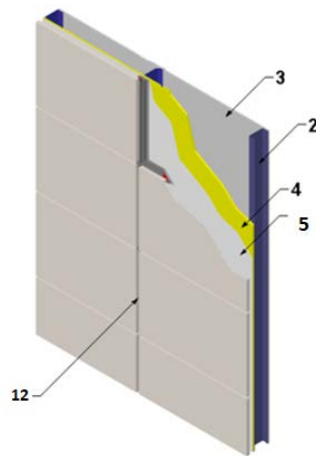
ALU/MCMWP 30-03

ALU/MCMWP 30-03

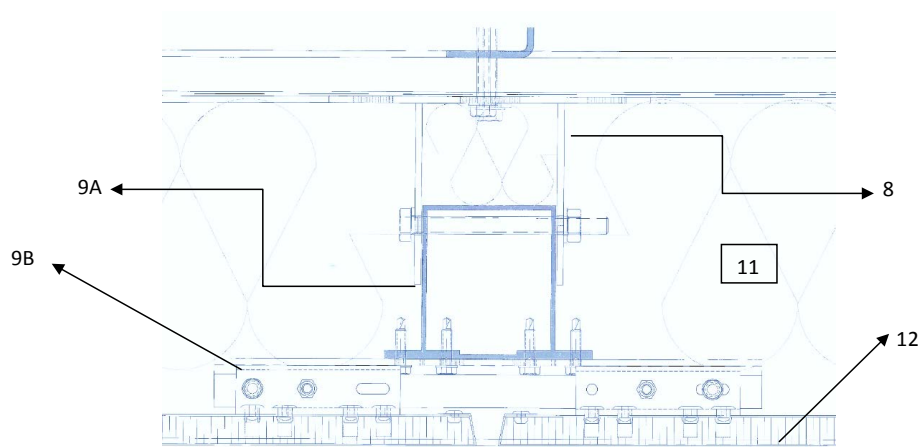


Division 7 – Thermal and Moisture Protection
07 42 00 Wall Panels
07 42 13.23 Metal Composite Material Wall Panels

Alucoil
Design No. ALU/MCMWP 30-03
Aluminum Honeycomb Panel
Larcore Honeycomb A2 Panel
NFPA 285 – Meets Conditions of Acceptance



Item 1: Wall Assembly



**Cross Section View of Wall Assembly
FIRE-EXPOSED SIDE**

Date Revised: November 15, 2018

Page 1 of 3

Project No. G103347335

Version: 02 August 2017

SFT-BC-OP-19i

ALU/MCMWP 30-03 (2 OF 3)

Division 7 – Thermal and Moisture Protection
07 42 00 Wall Panels
07 42 13.23 Metal Composite Material Wall Panels

1. **EXTERIOR WALL ASSEMBLY:** Incorporate construction features in the exterior wall assembly as described in Items 2 through 12.
2. **STEEL FRAMING:** Install nominal 3-5/8 in., 18 GA steel studs spaced at 19-5/8 in. on center (oc). Attach the studs to 18 GA steel tracks using #6 x 1/2 in. long self-drilling, pan-head fasteners per stud flange.
3. **INTERIOR GYPSUM:** Install one layer of 5/8 in. thick, Type X gypsum board (horizontal orientation) to the interior side of the steel framing (Item 2) using #6 x 1-1/4 in. long, bugle-head, self-drilling screws at nominal spacing of 8 in. around the board perimeter and 12 in. in the field. All joints are to be taped with joint tape and spackled with joint compound. All fastener heads are to be spackled with joint compound.
4. **EXTERIOR GYPSUM:** Install one layer of 5/8 in. thick, Type X gypsum sheathing (horizontal orientation) to the interior side of the steel framing (Item 2) using #6 x 1-1/4 in. long, bugle-head, self-drilling screws at nominal spacing of 8 in. around the board perimeter and 12 in. in the field.
5. **WEATHER BARRIER (Air, Vapor, and Water Barrier):** Apply one layer of Henry Air-Bloc 16 MR liquid-applied weather barrier to the exterior sheathing (Item 4).
6. **TRIM/CAP:** (Not Shown) Install a 12 x 3 in., 8 GA aluminum L-profile cap on the top edge of the wall assembly (Item 1) with the 3 in. leg on the exterior side, fastened to the studs (Item 2) using DIN 7504-K Ø6'3X50mm A2/50 hex washer-head screws spaced at 22 in. oc. Install a 6-5/16 in. high x 3 in. x 3/4 in., 8 GA aluminum Z-profile trim along the bottom edge of the wall assembly (Item 1) with the 3 in. leg against the weather barrier (Item 6) and the

3/4 in. leg to the exterior side, pointing down. Fasten the X-profile to the studs (Item 2) using one #12 x 2 in. long self-drilling, hex washer-head screw through the 3 in. leg at each stud.

7. **WEATHER BARRIER:** (Not Shown)

ADHESIVE – Apply one layer of Henry Blueskin Adhesive on the exterior surface of the bottom edge of the exterior gypsum (Item 4) and trim (Item 6) 12 in. in height.

BARRIER – Apply one layer of Henry 9 in. Blueskin SA over the adhesive layer, with the running edge flush with the bottom edge of the assembly. The screw heads are also covered in this manner.

8. **BRACKETS:** Install brackets on alternating studs (Item 2) beginning with center stud of assembly. Self-weight Brackets are to be used where top of vertical profile (Item 9) is to be fastened to assembly, and Wind Brackets below, for each vertical profile. Brackets are to be vertically spaced 52 in. oc nominally, beginning 18-1/2 in. below top edge of profile, on profiles greater than 42 in. Brackets on profiles 42 in. or less are to be installed at a min. of two brackets per profile with a nominal spacing 20 in. oc, beginning 4 in. from top edge of profile.

WIND BRACKETS – (2-3/8 in. high, 5-3/4 in. wide, and 3-3/8 in. deep) Fasten Wind Brackets to the studs (Item 2) using one DIN 7504-K Ø6'3X50mm A2/50 hex washer-head screw with 5/16 in. I.D. washer.

SELF-WEIGHT BRACKETS – (3-5/8 in. high, 5-3/4 in. wide, and 3-3/8 in. deep) Fasten Self-weight Brackets to the studs (Item 2) using two DIN 7504-K Ø6'3X50mm A2/50 hex washer-head screws with 5/16 in. I.D. washers.

Date Revised: November 15, 2018

Page 2 of 3

Project No. G103347335

Version: 02 August 2017

SFT-BC-OP-19I

ALU/MCMWP 30-03 (3 OF 3)

Division 7 – Thermal and Moisture Protection
07 42 00 Wall Panels
07 42 13.23 Metal Composite Material Wall Panels

9. VERTICAL PROFILES:

- A. Install 2.4 in. wide and 2.76 in. in deep, 12 GA brackets using DIN 933 M8x90 hex-head screws with DIN 125 washers and DIN 934 nuts through machined holes, aligning holes on brackets and profiles.
- B. Vertical Profiles contain pre-screwed hangers to match the clip positions that are pre-riveted into to the Honeycomb Larcore A2 Panels (Item 12).

10. INSULATION PINS: (Not Shown) Attach Spindle MS 12 GA x 6-1/2 in. pins to the wall on the studs (Item 2) between the brackets (Item 6), at 8 in. oc spacing, using two #6 x 1-5/8 in. Phillips bugle-head, self-drilling screws through the plate on each pin. Exposed points of each pin must be bent up 90 degrees.

11. INSULATION: Install 5 in. thick Rockwool Cavityrock® mineral wool insulation board (outer layer density: 6.2 pcf; inner layer density: 4.1 pcf) onto the insulation pins (Item 9). Install square washers over the insulation pins (Item 9). Fill voids in vertical profiles (Item 8) with 2-1/2 in. strips of insulation, compressed to fit.

12. CERTIFIED COMPANY: Alucoil

CERTIFIED PRODUCT: Aluminum Honeycomb Panels

MODEL: Honeycomb Larcore A2 Panel (14mm thick)

EXTERIOR VEENER – Install Alucoil's 14mm Honeycomb Larcore A2 Panels by sliding the preinstalled clips into the hangers on the vertical profiles (Item 9). The clip must be secured by fastening it to the hangers using self-drilling DIN 7504-K Ø6'3X50mm A2/50 hex washer-head screws. There is a 3/8 in. nominal gap spacing between each panel.

13. OPENINGS: (Not Shown) Openings must be protected with 12 x 2 in., 8 GA aluminum L-profile flashing with the 2 in. flange to the exterior. Install nominal 3-5/8 in. deep, 18 GA steel studs spaced at 2-7/16 in. oc on opening sides.

Date Revised: November 15, 2018

Page 3 of 3

Project No. G103347335

Version: 02 August 2017

SFT-BC-OP-19I